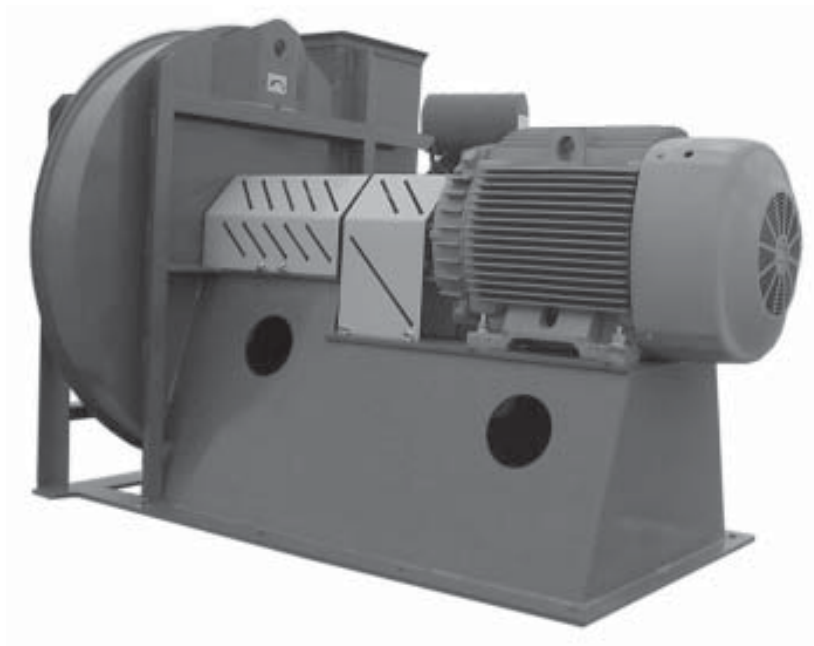


Industrial
Air Technology Corp.
Industrial Fans & Blowers

High Pressure Industrial Blowers Type BCLS

**Arrangements 1 & 8
Sizes 270-730**

Static Pressures to 100" Wg



Industrial
Air Technology Corp.

P.O. Box 2317, Gaylord, MI 49734
Phone: 989-705-1768 • Fax: 989-732-1641
www.indairtech.com

BCLS High Pressure Industrial Blowers

Applications

- *Combustion*
- *Air Cooling*
- *Gas Boosting*
- *Aeration*
- *Process Systems*
- *Fume Exhaust*
- *Conveying*
- *Water Stripping*
- *Fluid Beds*
- *Glass Blowing*
- *Textile Fiber Stripping*
- *Product Drying*

Design Features

Backward Curved Blades in a Shrouded Wheel
High Efficiency and Low Noise
Suitable for High Temperature Applications
Extremely Rugged High Pressure Construction

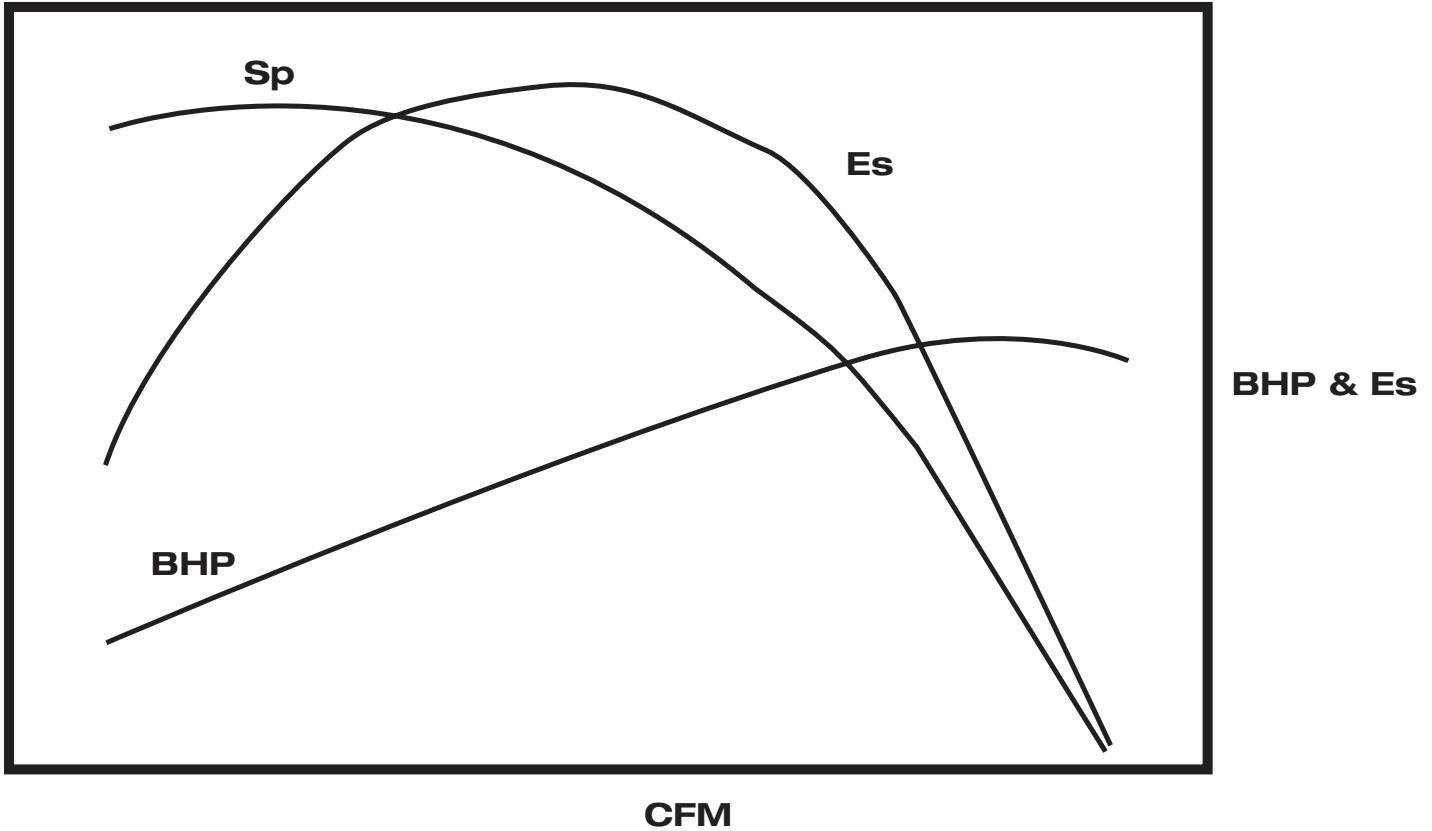
Markets

<i>Chemical</i>	<i>Plastics</i>
<i>Cement</i>	<i>Glass</i>
<i>Food Processing</i>	<i>Rubber</i>
<i>Knitting</i>	<i>Tobacco</i>
<i>Paper</i>	<i>Salt</i>
<i>Textile</i>	<i>Foundries</i>
<i>Pharmaceutical</i>	<i>Breweries</i>
<i>Steel</i>	<i>Candy</i>

Industrial
Air Technology Corp.

P.O. Box 2317, Gaylord, MI 49734
Phone: 989-705-1768 • Fax: 989-732-1641
www.indairtech.com

BCLS High Pressure Industrial Blowers



Performance Range

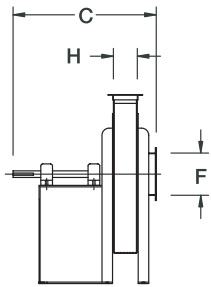
SIZE	CFM	Sp In Wg	CFM	Sp In Wg
270	4400	53	8000	30
300	5100	47	9250	27
330	6300	50	11550	28
365	8500	61	15600	35
402	8800	44	16000	25
445	12000	53	21700	30
490	15800	65	28900	37
542	16800	48	30700	27
600	22700	59	41600	34
660	30300	72	55400	41
730	38000	78	70800	45

Industrial
Air Technology Corp.

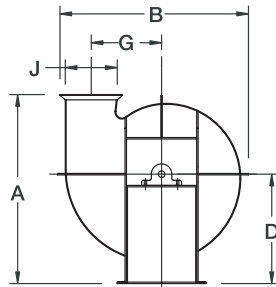
P.O. Box 2317, Gaylord, MI 49734
Phone: 989-705-1768 • Fax: 989-732-1641
www.indairtech.com

Dimensional Data

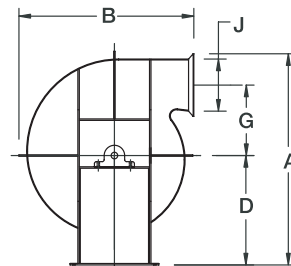
Sizes 270-730 BCLS



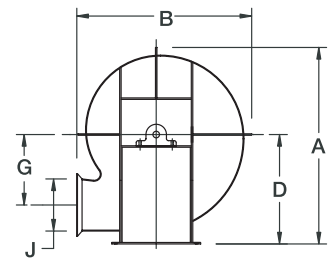
ARRANGEMENT 1



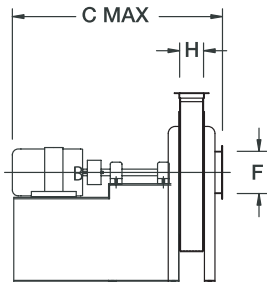
360°



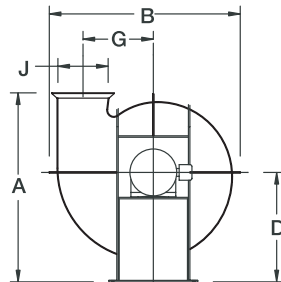
90°



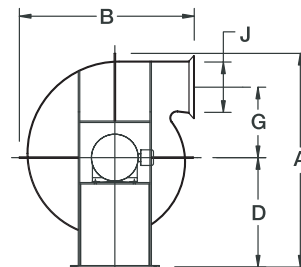
270°



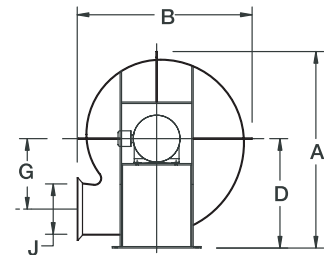
ARRANGEMENT 8



360°



90°



270°

SIZE	A			B			C		D			F Dia	G	H	J	BARE FAN WT		MAX RPM	
	90°	270°	360°	90°	270°	360°	APR 1	APR 8	90°	270°	360°					APR 1	APR 8	APR 1	APR 8
270	52	55	47	46	46	51	36	79	24	31	26	10.88	18	6.19	13.38	760	890	3800	3600
300	57	61	52	51	51	56	42	85	26	35	29	12	21	6.81	14.81	900	1380	3200	3600
330	62	65	56	56	56	61	45	99	28	37	31	13.25	22	7.44	16.19	1200	1580	3000	3600
365	68	71	62	61	61	67	50	106	31	40	34	14.63	25	6.31	17.88	1600	2070	3000	3600
402	74	77	68	67	67	73	55	115	34	43	37	16.13	27	9.13	19.69	1900	2550	2300	3600
445	83	85	75	75	75	82	57	106	38	47	41	17.88	30	10	21.69	2400	3080	2300	1800
490	90	91	81	82	82	90	62	119	41	50	44	19.63	33	10.94	23.81	2800	3860	2300	1800
542	99	101	90	90	90	98	69	133	45	56	49	21.75	37	12.06	26.31	3600	4410	1800	1800
600	111	113	100	100	100	110	77	143	51	63	55	24.13	40	13.25	29.06	4800	5950	1800	1800
660	121	124	110	109	109	120	84	156	55	69	60	26.5	45	14.69	32.06	6600	7700	1800	1800
730	133	135	121	120	120	131	93	173	61	75	66	29.38	49	16.13	35.38	7700	9160	1700	1800

1. Dimensions have been rounded up to the nearest 1".
2. All dimensions shown on this and other pages are for general information only and should not be used for precise construction/ installation purposes. Only prints marked certified should be used for this purpose. All fans are shown in clockwise rotation (as viewed from side opposite fan inlet) and are viewed from the drive side of fan. Counter clockwise fans are dimensionally equal but viewed in a mirror image.
3. Due to continuous product improvement at Industrial Air Tech. Corp., dimensions are subject to change. For more complete dimensional information, refer to the applicable Industrial Air Tech. Corp. submittal drawing.

**Industrial
Air Technology Corp.**

P.O. Box 2317, Gaylord, MI 49734
 Phone: 989-705-1768 • Fax: 989-732-1641
 www.indairtech.com