

Technical Data & Performance Tables

Radial Tipped

Type RTS

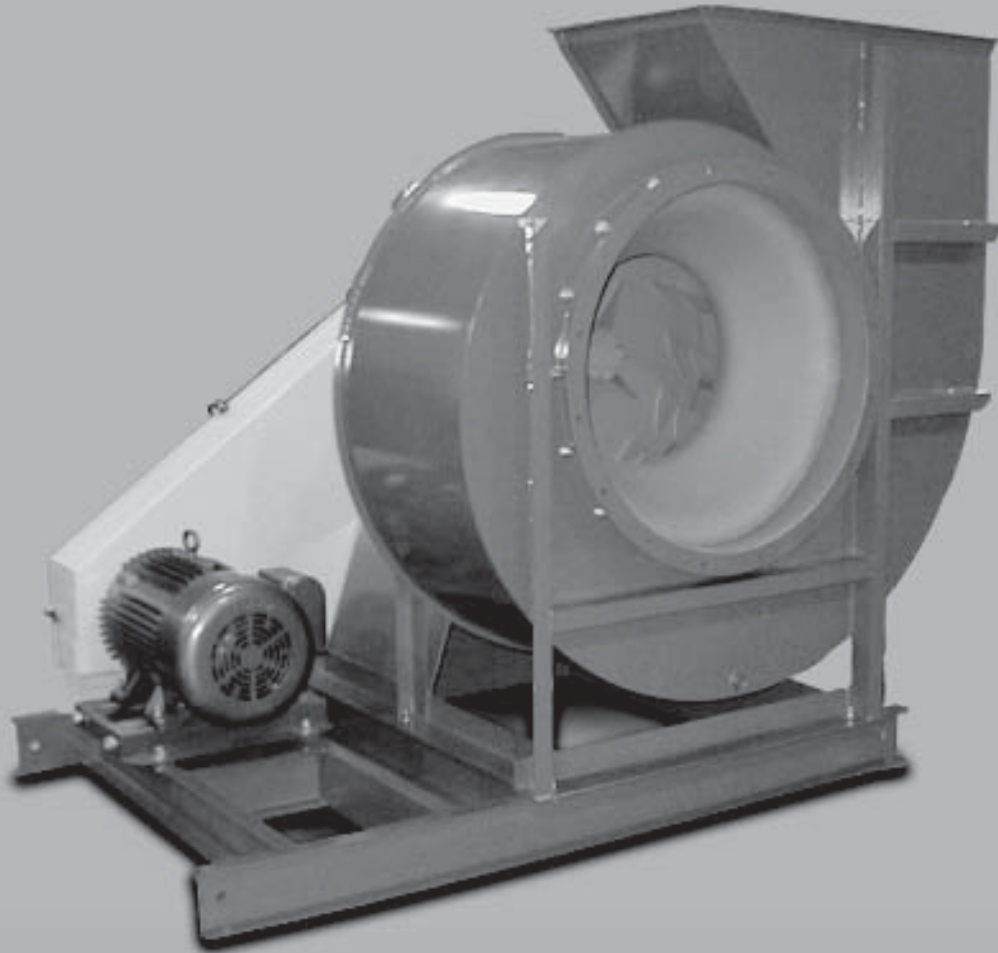




TABLE OF CONTENTS

Selection Procedure	4
Correction Factors	5
V.I.V. Losses in Full Open Position	
Damper Losses in Full Open Position	
Drive Losses	
Correction Factor Table	6
Pressure Units	6
Spark Resistance	7
Fan Laws	7
Drive Arrangements	8
Inlet Boxes & Bearing Pedestals	8
Rotation & Discharge	9
Maximum Speed De-Rating for Temperature	10
Motor Torque Selection	10
Wheel WR^2	10
Fan Terminology	11
Motor Positions	11
Performance Data RTS	12-17
Dimensional Data	18
Quick Reference Check List	19

SELECTION PROCEDURE

The performance tables shown in this catalog may be used to select a fan for your specific application. When selecting a fan be sure to keep the following parameters in mind to ensure the correct fan selection.

- A) All ratings are based on standard air, defined as follows: air temperature is 70 F, 50% RH, 29.92" HG, and 0.075 lb./cu.ft. density. For SI units as follows: 21C, 50% RH, 101.3 kPa and 1.2 kg/m cu.
- B) All tests on which the performance tables are based were conducted with open inlets and ducted outlets. None of the tests account for any losses caused by VIV's, outlet dampers, inlet screens, v-belt drives, or unusual duct configurations.

Fan characteristics are such that volumetric flow rate is unaffected by gas density but the power and pressure vary directly with changes in gas density. Therefore, the selection process will require that rating tables are entered with actual volumetric flow rate (*ACFM*) and a corrected fan static pressure. The corresponding equation for the corrected fan static pressure (*Pe*) is as follows:

$$Pe = Pa (0.075 / Da)$$

Pe = Corrected Fan Static Pressure

Pa = Actual Fan Static Pressure @ *Da*

Da = Actual Density, lb./cu. ft.

By adhering to the following procedure, all the factors necessary to ensure the proper selection of the fan can be easily met. The desired performance should be easy to obtain with a high degree of accuracy.

- 1) Determine the actual amount of air flow (*ACFM*) that is required for the system conditions. The elevation and temperature of the air as well as any other airstream variable (*humidity, molecular weight, negative inlet pressure, etc.*) that will have a direct influence on the density must be known at this point.
- 2) Determine the system resistance due to duct work and all other system components. This should be given in inches of water. Now you have the static pressure component for proper selection of the fan.
- 3) To make a fan selection for a density other than 0.075 lb./cu. ft. (*1.2 kg/m cu.*), a correction must be made before and after the selection as follows:
 - a) Compute actual fan inlet air density correction (*refer to table for temperature and elevation corrections*).
 - b) Take the actual static pressure and divide it by the density correction factor to obtain the equivalent fan static pressure at standard density (*0.075*).
- 4) At this point you are ready to make the fan selection. It is necessary to use the corrected fan static pressure (*Pe*) as the initial guide to the fan operating point. When this point is determined there may be several fans that can give you the desired performance. At this time you must determine what criteria is most important — low fan cost, low operating cost, low sound level, duct design velocity, space limitations, etc.
- 5) Now with the fan selected, we must consider all losses due to fan accessories.
 - a) VIV's and outlet dampers cause losses estimated by figures A and B.
 - b) Inlet boxes and silencers are other items that cause losses that must be accounted for.
- 6) Unusual inlet and outlet conditions cause an adverse affect on the fan. AMCA publication #201 contains these corrections. These must also be added to static pressure and are known as System Effect Factors (*SEF*).
- 7) Now you can add all accessory losses and SEF losses to the system fan static pressure (*Pe*) at standard density to obtain the equivalent selection fan static pressure. Then re-enter the selection tables for the chosen fan size with the equivalent selection fan static pressure (*SP*) and the required *ACFM*.
- 8) Determine the fan speed at the corresponding selection point based on *SP* and *ACFM*.
- 9) Read the fan BHP at the selection point.
- 10) Add approximately 3% to BHP for v-belt drive loss (*see figure C*). Now the total BHP is known at 0.075 lb./cu. ft. density. Then take this number and multiply it by the density correction factor to show actual horsepower at operating conditions.

Variable Inlet Vanes

Reductions up to approximately 30% of wide open (*free air*) flow are possible with inlet vanes. As an inlet vane closes it imparts a spin on the air as it enters the fan inlet in the direction of the wheel rotation. This pre-spin of the air helps to maintain the efficiency of the fan at the turn down conditions. To compensate for this slight loss, you must increase the RPM of the fan and BHP. This correction is shown as pressure loss on the adjacent chart.

Outlet Damper

Due to resistance in air flow caused by a wide open position on the outlet damper, a correction must be made to obtain required performance. Outlet damper losses must be added to the fan static pressure before entering the performance tables. This value is based off of outlet velocity and may be obtained from the adjacent chart.

V-Belt Drive Losses

Standard v-belt drives cause a loss of motor horsepower in fans. As a result there must be a factor added to the final horsepower to compensate for the losses. The losses tend to be higher as the fan speed goes up. The lower the horsepower the higher the percentage of losses also. The typical drive loss is between 3-8% of fan shaft HP. See adjacent chart.

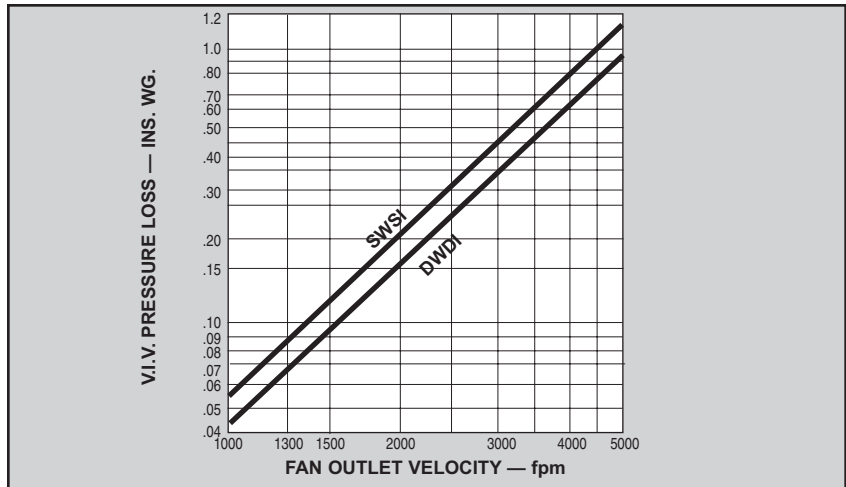


Figure A; V.I.V. Losses in Full Open Position

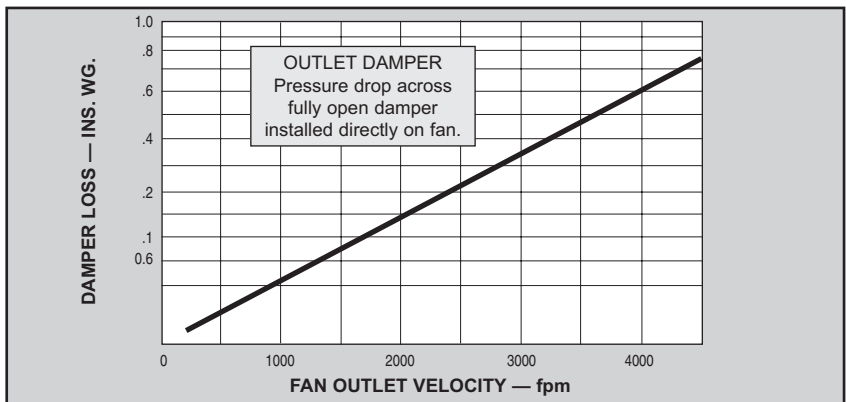


Figure B; Outlet Damper Losses in Full Open Position

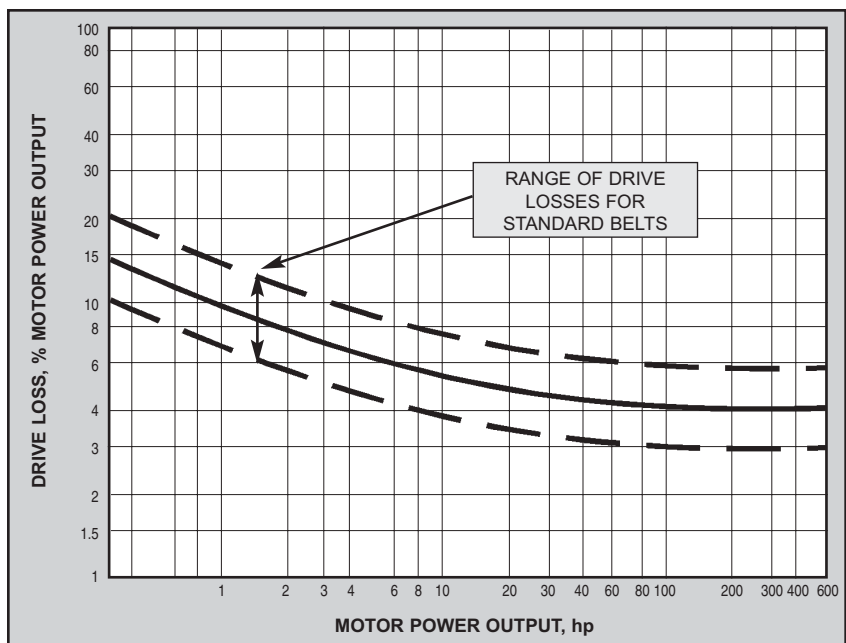


Figure C; Drive Losses

CORRECTION FACTOR TABLE

Altitude & Temperature

AIR TEMP IN °F	ALTITUDE (ft. above sea level)																
	0	500	1000	1500	2000	2500	3000	3500	4000	4500	5000	5500	6000	7000	8000	9000	10000
	BAROMETRIC PRESSURE IN INCHES HG																
	29.92	29.38	28.86	28.33	27.82	27.31	26.81	26.32	25.84	25.36	24.89	24.43	23.98	23.09	22.12	21.38	20.57
70	1.000	.981	.965	.947	.930	.913	.896	.880	.864	.848	.832	.817	.799	.774	.739	.715	.687
100	.946	.928	.913	.896	.880	.864	.848	.832	.817	.802	.787	.773	.756	.732	.699	.676	.650
125	.906	.889	.874	.858	.843	.827	.812	.797	.783	.768	.754	.740	.724	.701	.670	.648	.622
150	.869	.852	.839	.823	.808	.793	.779	.765	.751	.737	.723	.710	.694	.673	.642	.621	.597
175	.835	.819	.806	.791	.777	.762	.748	.735	.721	.708	.695	.682	.667	.646	.617	.597	.574
200	.803	.788	.775	.760	.747	.733	.719	.707	.694	.681	.668	.656	.642	.622	.593	.574	.552
225	.773	.758	.746	.732	.719	.706	.693	.680	.668	.656	.643	.632	.618	.598	.571	.553	.531
250	.747	.733	.721	.707	.695	.682	.669	.657	.645	.634	.622	.610	.597	.578	.552	.534	.513
275	.721	.707	.696	.683	.671	.658	.646	.634	.623	.611	.600	.589	.576	.558	.533	.516	.495
300	.697	.684	.673	.660	.648	.636	.625	.613	.602	.591	.580	.569	.557	.539	.515	.498	.479
325	.675	.662	.651	.639	.628	.616	.605	.594	.583	.572	.562	.551	.539	.522	.499	.483	.464
350	.654	.642	.631	.619	.608	.597	.586	.576	.565	.555	.544	.534	.523	.506	.483	.468	.449
375	.634	.622	.612	.600	.590	.579	.568	.558	.548	.538	.527	.518	.507	.491	.469	.453	.436
400	.616	.604	.594	.583	.573	.562	.552	.542	.532	.522	.513	.503	.492	.477	.455	.440	.423
425	.598	.587	.577	.566	.556	.546	.536	.526	.517	.507	.498	.489	.478	.463	.442	.428	.411
450	.582	.571	.562	.551	.541	.531	.521	.512	.503	.494	.484	.475	.465	.450	.430	.416	.400
475	.567	.556	.547	.537	.527	.518	.508	.499	.490	.481	.472	.463	.453	.438	.419	.405	.390
500	.552	.542	.533	.523	.513	.504	.495	.486	.477	.468	.459	.451	.441	.427	.408	.395	.380
525	.538	.528	.519	.509	.500	.491	.482	.473	.465	.456	.448	.440	.430	.416	.398	.385	.370
550	.525	.515	.507	.497	.488	.479	.470	.462	.454	.445	.437	.429	.419	.406	.388	.375	.361
575	.512	.502	.494	.485	.476	.467	.459	.451	.442	.434	.426	.418	.409	.396	.378	.366	.352
600	.500	.491	.483	.474	.465	.457	.448	.440	.432	.424	.416	.409	.400	.387	.369	.357	.343
625	.488	.479	.471	.462	.454	.446	.437	.429	.422	.414	.406	.397	.390	.378	.361	.349	.335
650	.477	.468	.460	.452	.444	.436	.427	.420	.412	.404	.397	.390	.381	.369	.353	.341	.328
675	.467	.458	.451	.442	.434	.426	.418	.411	.403	.396	.389	.382	.373	.361	.345	.334	.321
700	.457	.448	.441	.433	.425	.417	.409	.402	.395	.388	.380	.373	.365	.354	.338	.327	.314
725	.447	.439	.431	.423	.416	.408	.401	.393	.386	.379	.372	.365	.357	.346	.330	.320	.307
750	.438	.430	.423	.415	.407	.400	.392	.385	.378	.371	.364	.358	.350	.339	.323	.313	.301
775	.429	.421	.414	.406	.399	.392	.384	.378	.371	.364	.357	.350	.343	.332	.317	.307	.295
800	.421	.413	.406	.399	.392	.384	.377	.370	.364	.357	.350	.344	.336	.326	.311	.301	.289
825	.412	.404	.398	.390	.383	.376	.369	.363	.356	.349	.343	.337	.329	.319	.304	.295	.283
850	.404	.396	.390	.383	.376	.369	.362	.356	.349	.343	.336	.330	.323	.313	.298	.289	.278
875	.397	.389	.383	.376	.369	.362	.356	.349	.343	.337	.330	.324	.317	.307	.293	.284	.273
900	.389	.382	.375	.368	.362	.355	.349	.342	.336	.330	.324	.318	.311	.301	.287	.278	.267
925	.382	.375	.369	.362	.354	.349	.342	.336	.330	.324	.318	.312	.305	.296	.282	.273	.262
950	.375	.369	.362	.355	.349	.342	.336	.330	.324	.318	.312	.306	.300	.291	.277	.268	.258
975	.369	.361	.356	.349	.343	.337	.331	.325	.319	.313	.307	.301	.295	.286	.273	.264	.254
1000	.363	.356	.350	.344	.338	.331	.325	.319	.314	.308	.302	.297	.290	.281	.268	.260	.249
1025	.357	.350	.345	.338	.332	.327	.320	.314	.308	.303	.297	.292	.285	.276	.264	.255	.245
1050	.351	.344	.339	.332	.326	.320	.314	.309	.303	.298	.292	.287	.280	.272	.259	.251	.241
1075	.345	.338	.333	.327	.321	.315	.310	.304	.298	.293	.287	.282	.276	.267	.255	.247	.237
1100	.339	.333	.327	.321	.315	.310	.304	.298	.293	.287	.282	.277	.271	.263	.251	.243	.233
1125	.334	.328	.322	.316	.311	.305	.299	.294	.289	.283	.278	.273	.267	.259	.247	.239	.229
1150	.329	.323	.317	.312	.306	.300	.295	.290	.284	.279	.274	.269	.263	.255	.243	.235	.226
1175	.324	.318	.313	.307	.301	.296	.290	.285	.280	.275	.270	.265	.259	.251	.239	.232	.223
1200	.319	.313	.308	.302	.297	.291	.286	.281	.276	.271	.265	.261	.255	.247	.236	.228	.219

PRESSURE UNITS COMMONLY USED IN FAN APPLICATIONS

In. WG	Osi	Psi	HG	mm WG	mm HG	Atm
1	0.576	.0360	.0733	25.400	1.863	.00245
1.735	1	0.062	0.127	44.074	3.231	.00425
27.761	16.093	1	2.036	705.13	51.715	.068
13.635	7.857	.491	1	346.33	25.400	.033
.0394	0.023	.00142	.00289	1	.073	.00010
.537	0.309	.0193	.0394	13.365	1	.00132
407.98	235.119	14.696	29.921	.104	760.00	1

Classifications for Spark Resistant Construction

Type A — Construction requires that all parts in contact with the airstream must be a non-ferrous material.

Type B — Construction requires fan to have a non-ferrous wheel and non-ferrous ring through which the shaft passes.

Type C — Construction requires that a shift of the wheel or shaft not permit two ferrous parts to rub together.

For this Standard, non-ferrous material shall be any material with less than 5% iron or any other material with demonstrated ability to be spark resistant.

FAN LAWS

Fan Speed Varies with Size and Density Constant

Volume (V) varies as the speed (S) varies.

Pressure (P) varies as the square of the speed (S) change.

Horsepower (HP) varies as the cube of the speed (S) change.

$$\frac{V_2}{V_1} = \frac{S_2}{S_1}$$
$$\frac{P_2}{P_1} = \left[\frac{S_2}{S_1} \right]^2$$
$$\frac{HP_2}{HP_1} = \left[\frac{S_2}{S_1} \right]^3$$

Fan Size Varies with Speed and Density Constant

Volume (V) varies as the cube of the wheel diameter (D) change.

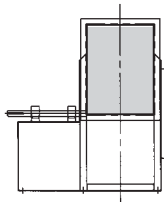
Pressure (P) varies as the square of the wheel diameter (D) change.

Horsepower (HP) varies as the fifth power of the wheel diameter (D) change.

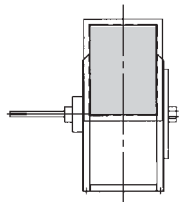
$$\frac{V_2}{V_1} = \left[\frac{D_2}{D_1} \right]^3$$
$$\frac{P_2}{P_1} = \left[\frac{D_2}{D_1} \right]^2$$
$$\frac{HP_2}{HP_1} = \left[\frac{D_2}{D_1} \right]^5$$

Application of these laws is at user's discretion. The above laws are useful, but they can lead to errors if they are misapplied. The calculated fan must have the same point of rating and characteristic performance curve as the known fan. When in doubt, it is best to reselect the fan rather than attempt to use the fan laws.

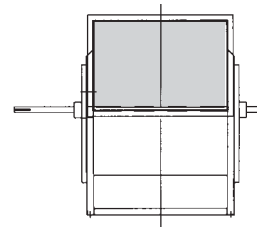
DRIVE ARRANGEMENTS



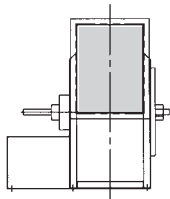
ARR. 1 SWSI for belt drive or direct connection. Impeller overhung. Two bearings on base.



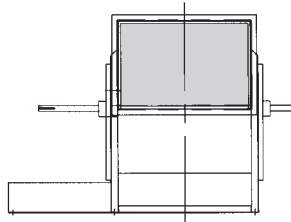
ARR. 3 SWSI for belt drive or direct connection. One bearing on each side and supported by fan housing.



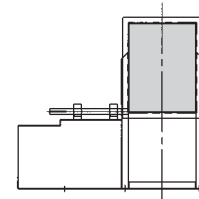
ARR. 3 DWDI for belt drive or direct connection. One bearing on each side and supported by fan housing.



ARR. 7 SWSI for direct drive. Arrangement 3 plus base for prime mover.

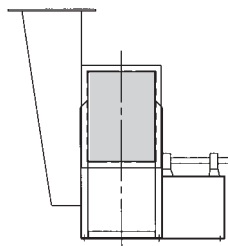


ARR. 7 DWDI for direct drive. Arrangement 3 plus base for prime mover.

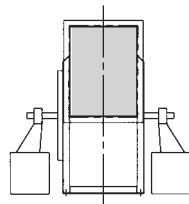


ARR. 8 SWSI for direct drive. Arrangement 1 plus extended base for prime mover.

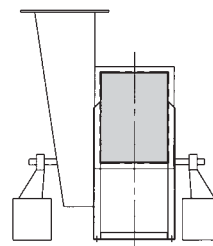
INLET BOXES & BEARING PEDESTALS



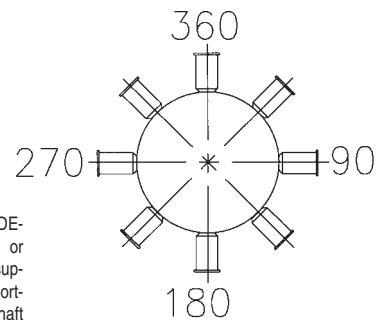
ARR. 1 SWSI WITH INLET BOX for belt drive or direct connection. Impeller overhung, two bearings on base. Inlet box may be self-supporting.



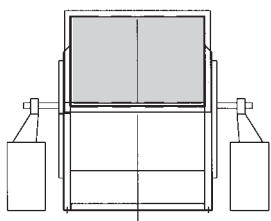
ARR. 3 SWSI WITH INDEPENDENT PEDESTALS for belt drive or direct connection fan. Housing is self-supporting. One bearing on each side supported by independent pedestals.



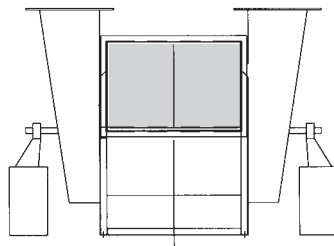
ARR. 3 SWSI WITH INLET BOX & INDEPENDENT PEDESTALS for belt drive or direct connection fan. Housing is self-supporting. One bearing on each side supported by independent pedestals with shaft extending through inlet box.



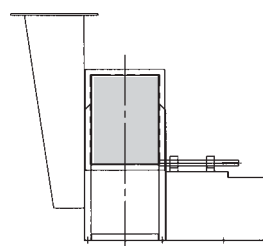
1. Reference line is the top vertical axis through center of fan shaft.
2. Position of inlet box and air entry to inlet box is determined from DRIVE SIDE OF FAN.
3. Position of inlet box is designated in degrees clockwise from top vertical axis as shown, and may be any intermediate angle as required.
4. Positions 135° to 225° in some cases interfere with floor structure.



ARR. 3 DWDI WITH INDEPENDENT PEDESTALS for belt drive or direct connection fan. Housing is self-supporting. One bearing on each side supported by independent pedestals.

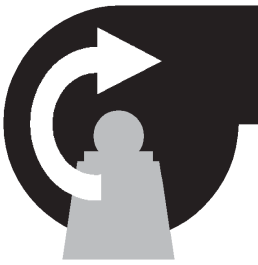


ARR. 3 DWDI WITH INLET BOX & INDEPENDENT PEDESTALS for belt drive or direct connection fan. Housing is self-supporting. One bearing on each side supported by independent pedestals with shaft extending through inlet box.

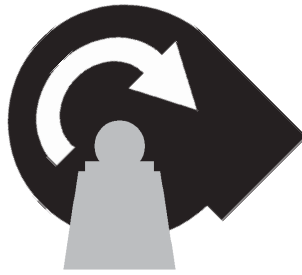


ARR. 8 SWSI WITH INLET BOX for belt drive or direct connection. Impeller overhung, two bearings on base plus extended base for prime mover. Inlet box may be self-supporting.

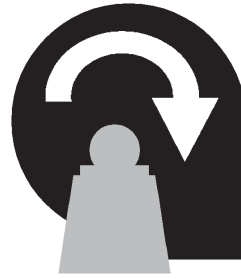
DESIGNATIONS FOR ROTATION & DISCHARGE OF CENTRIFUGAL FANS



Clockwise
90° (Top Horizontal)



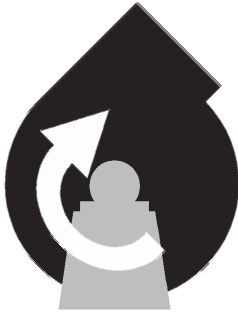
Clockwise
135° (Top Angular Down)



Clockwise
180° (Down Blast)



Clockwise
225° (Bottom Angular Down)



Clockwise
45° (Top Angular Up)



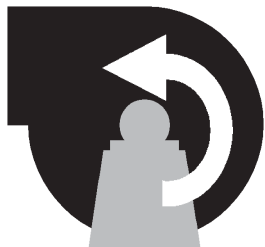
Clockwise
360° (Up Blast)



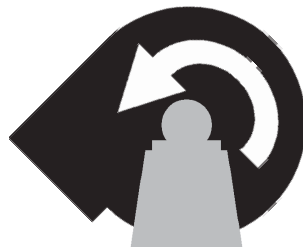
Clockwise
315° (Bottom Angular Up)



Clockwise
270° (Bottom Horizontal)



Counterclockwise
90° (Top Horizontal)



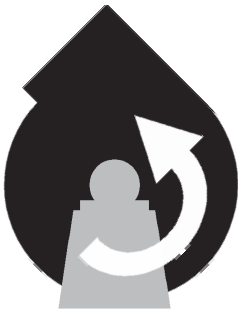
Counterclockwise
135° (Top Angular Down)



Counterclockwise
180° (Down Blast)



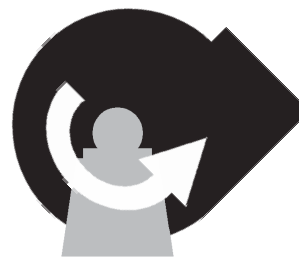
Counterclockwise
225° (Bottom Angular Down)



Counterclockwise
45° (Top Angular Up)



Counterclockwise
360° (Up Blast)



Counterclockwise
315° (Bottom Angular Up)



Counterclockwise
270° (Bottom Horizontal)

Direction of rotation is determined from the side opposite the fan inlet (*typically the drive side*).

On double inlet fans with drives on both sides, drive side is that with the higher powered drive unit.

Direction of discharge is determined in accordance with diagrams above.

MAXIMUM SPEED DE-RATING FOR TEMPERATURE

Temp. (F)	Material of Construction				
	Steel	Corten	304 SS	316 SS	Aluminum
70	1.00	1.00	1.00	1.00	1.00
200	1.00	1.00	.89	.92	.95
300	.98	1.00	.80	.87	
400	.96	1.00	.77	.84	
500	.91	1.00	.74	.80	
600	.88	1.00	.71	.78	
700	.85	1.00	.69	.77	
800	.80	.96	.68	.76	
900	NR	NR	.65	.73	
1000	NR	NR	NR	.72	

MOTOR TORQUE SELECTION

There are many applications which have a large fan moving a high volume of air but at a low static pressure, so a large horsepower motor is not required. In these instances, many times the motor is not large enough to turn the fan wheel and shaft due to high inertia requirements. In these instances one needs to consult with the motor or starter manufacturer to see if the motor is capable of the necessary load inertia. The chart that follows gives quick calculations that can be performed to see if the motor has the necessary start up capabilities.

$$t = \frac{WR^2 \times N^2}{1.62 \times \text{HPm}}$$

t = Start time in seconds.

WR² = Wheel inertia - lb. ft.²

N = Fan speed in 1000's of rpm.

HPm = Motor horsepower.

Start time

10 seconds or less — satisfactory.

11 to 15 seconds — probably satisfactory.

15 to 20 seconds — check with starter and motor manufacturer.

Over 20 seconds — not recommended.

In order to compare published motor WR² capability with that of the fan on V-belt drive applications, it is necessary to convert the fan WR² to the equivalent WR² referred to the motor shaft by applying the following formula.

$$WR_m^2 = WR_f^2 \times \left[\frac{N_f}{N_m} \right]^2$$

Where WR_m = Equivalent WR² referred to motor shaft.

WR_f² = Fan WR² at fan speed.

N_f = Fan speed.

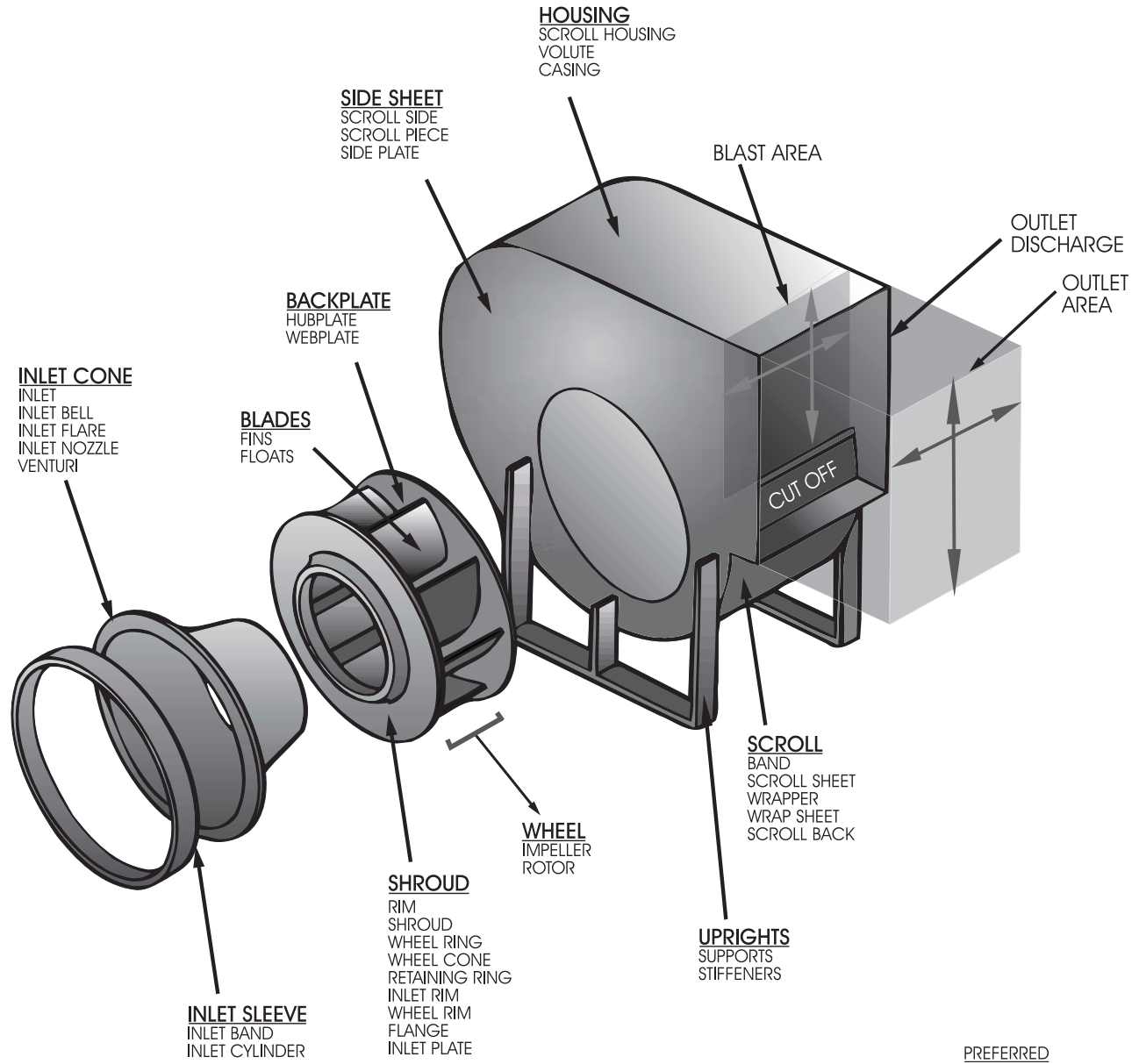
N_m = Motor speed.

RTS WR² VALUES

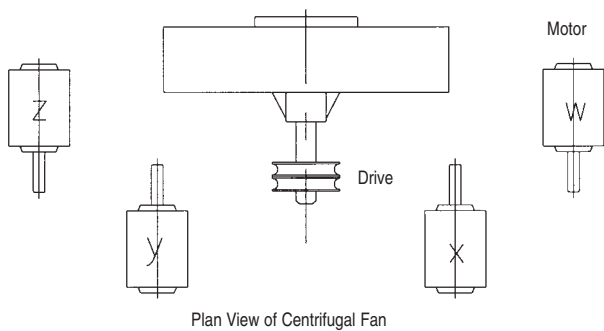
The following chart is a listing of the WR² (lb. ft²) values of the RTS fans. The values can be plugged into the previously given formulas above for calculating the motor capabilities in regards to direct drive as well as belt drive fan units.

RTS	
Fan Size	Class 30 WR ² (lb. ft ²)
270	82
300	132
330	183
365	299
402	450
445	706
490	1135
542	2004
600	2949
660	4606
730	7570
807	10999

FAN TERMINOLOGY



MOTOR POSITIONS



The diagram on the left indicates the standard terms for identifying motor position on the drive side of the fan. The location of the motor is determined by facing the drive side of the fan and designating the position by the letters, W, X, Y and Z. These positions are commonly used with arrangements 1 and 3.

PERFORMANCE DATA

RTS 270

WHEEL DIAMETER 27 IN.

MAX WHEEL SPEED Class 30 - 3470 RPM

STATIC PRESSURE (in. WG)																					
		6		10		12		16		20		22		25		28		30		32	
CFM	OV	RPM	BHP	RPM	BHP	RPM	BHP	RPM	BHP	RPM	BHP	RPM	BHP	RPM	BHP	RPM	BHP	RPM	BHP	RPM	BHP
10000	2375	1538	13.11																		
12000	2850	1623	16.21	1952	26.13	2101	31.42														
14000	3325	1721	19.92	2029	30.88	2170	36.69	2430	48.84												
16000	3800	1834	24.44	2118	36.33	2251	42.66	2499	55.86	2728	69.71	2837	76.89								
18000	4275	1958	29.96	2218	42.61	2343	49.44	2579	63.69	2799	78.59	2903	86.26	3054	98.01	3199	110.1				
20000	4749	2092	36.63	2329	49.94	2445	57.17	2668	72.42	2878	88.37	2979	96.57	3124	109.1	3264	121.9	3354	130.6	3443	139.5
22000	5224	2234	44.57	2449	58.49	2556	66.07	2766	82.18	2967	99.15	3063	107.9	3203	121.2	3338	134.8	3426	144.1		
24000	5699	2381	53.9	2578	68.44	2677	76.33	2873	93.17	3063	111.1	3155	120.3	3290	134.4	3420	148.8				
26000	6174	2531	64.71	2714	79.92	2805	88.11	2987	105.6	3166	124.3	3254	133.9	3383	148.8						

Performance shown is for installation type B - Free inlet, Ducted outlet with an evase.

Power rating (BHP) does not include drive losses.

Performance ratings do not include the effects of appurtenances in the air stream.

RTS 300

WHEEL DIAMETER 30 IN.

MAX WHEEL SPEED Class 30 - 3120 RPM

STATIC PRESSURE (in. WG)																					
		6		10		12		16		20		22		25		28		30		32	
CFM	OV	RPM	BHP	RPM	BHP	RPM	BHP	RPM	BHP	RPM	BHP	RPM	BHP	RPM	BHP	RPM	BHP	RPM	BHP	RPM	BHP
12000	2323	1375	15.7																		
14000	2711	1434	18.67	1737	30.5																
16000	3098	1501	22.1	1789	34.98	1919	41.8														
18000	3485	1577	26.1	1849	39.98	1973	47.34	2204	62.71												
20000	3872	1661	30.8	1915	45.58	2034	53.46	2256	69.88	2461	87.11	2558	96.01								
22000	4259	1752	36.33	1988	51.86	2101	60.23	2314	77.72	2513	96	2607	105.4	2743	119.8	2874	134.7				
24000	4647	1849	42.77	2067	58.98	2174	67.78	2378	86.26	2570	105.6	2661	115.5	2793	130.8	2920	146.3	3003	156.9	3083	167.7
26000	5034	1950	50.21	2152	67.04	2253	76.22	2447	95.61	2632	116	2720	126.5	2849	142.5	2972	158.8	3052	169.9		
28000	5421	2055	58.74	2243	76.18	2337	85.68	2521	105.9	2698	127.2	2784	138.2	2909	155	3029	172.2	3107	183.8		
30000	5808	2163	68.42	2338	86.49	2426	96.3	2600	117.2	2770	139.4	2852	150.9	2973	168.5	3090	186.5				
32000	6196	2273	79.32	2437	98.06	2520	108.2	2684	129.7	2846	152.7	2925	164.7	3041	183						
34000	6583	2385	91.52	2540	111	2617	121.4	2772	143.5	2926	167.2	3002	179.6	3114	198.5						

Performance shown is for installation type B - Free inlet, Ducted outlet with an evase.

Power rating (BHP) does not include drive losses.

Performance ratings do not include the effects of appurtenances in the air stream.

PERFORMANCE DATA

RTS 330

WHEEL DIAMETER 33 IN.
 MAX WHEEL SPEED Class 30 - 2850 RPM

STATIC PRESSURE (in. WG)																					
		6		10		12		16		20		22		25		28		30		32	
CFM	OV	RPM	BHP	RPM	BHP	RPM	BHP	RPM	BHP	RPM	BHP	RPM	BHP	RPM	BHP	RPM	BHP	RPM	BHP	RPM	BHP
15000	2400	1260	19.67																		
18000	2880	1329	24.34	1599	39.2	1720	47.11														
21000	3360	1411	29.94	1662	46.36	1777	55.05	1990	73.25												
24000	3840	1504	36.76	1736	54.56	1844	64.04	2047	83.81	2234	104.6	2323	115.3								
27000	4320	1606	45.1	1818	64.04	1920	74.26	2113	95.61	2292	117.9	2377	129.4	2500	147	2619	165.1				
30000	4800	1717	55.17	1909	75.08	2004	85.93	2186	108.7	2358	132.7	2440	144.9	2559	163.7	2673	182.9	2747	196	2819	209.2
33000	5280	1833	67.17	2009	88.01	2096	99.35	2267	123.5	2431	148.9	2509	162	2624	181.9	2734	202.3	2806	216.2		
36000	5760	1954	81.26	2115	103	2195	114.9	2355	140	2510	166.8	2585	180.6	2695	201.8	2802	223.4				
39000	6240	2078	97.6	2226	120.4	2301	132.6	2449	158.8	2595	186.7	2667	201.3	2772	223.5						
42000	6720	2204	116.4	2343	140.2	2412	153	2550	180	2687	209	2755	224.1								

Performance shown is for installation type B - Free inlet, Ducted outlet with an evase.
 Power rating (BHP) does not include drive losses.
 Performance ratings do not include the effects of appurtenances in the air stream.

RTS 365

WHEEL DIAMETER 36.5 IN.
 MAX WHEEL SPEED Class 30 - 2570 RPM

STATIC PRESSURE (in. WG)																					
		6		10		12		16		20		22		25		28		30		32	
CFM	OV	RPM	BHP	RPM	BHP	RPM	BHP	RPM	BHP	RPM	BHP	RPM	BHP	RPM	BHP	RPM	BHP	RPM	BHP	RPM	BHP
17000	2223	1119	22.21																		
20000	2615	1166	26.51	1418	43.64																
23000	3007	1221	31.47	1460	50.18	1568	60.11														
26000	3400	1282	37.26	1508	57.5	1612	68.21	1803	90.65												
29000	3792	1351	44.08	1563	65.7	1661	77.2	1845	101.2	2015	126.4	2095	139.4								
32000	4184	1425	52.1	1622	74.9	1716	87.16	1893	112.8	2057	139.5	2135	153.3	2247	174.4						
35000	4576	1505	61.51	1687	85.33	1776	98.25	1945	125.4	2103	153.7	2179	168.3	2288	190.6	2393	213.5	2461	229	2527	244.8
38000	4969	1589	72.41	1757	97.17	1841	110.7	2002	139.2	2155	169.1	2228	184.4	2334	207.9	2436	231.9	2502	248.3	2566	264.8
41000	5361	1676	84.93	1832	110.6	1910	124.6	2063	154.3	2209	185.7	2280	201.9	2383	226.6	2482	251.8	2546	268.9		
44000	5753	1765	99.2	1911	125.8	1984	140.3	2128	171.1	2268	203.8	2336	220.7	2436	246.6	2532	273				
47000	6145	1857	115.3	1993	142.9	2061	157.8	2197	189.6	2331	223.6	2396	241.1	2492	268.1						
50000	6538	1950	133.4	2078	162	2142	177.4	2270	210.1	2397	245.1	2460	263.3	2553	291.3						

Performance shown is for installation type B - Free inlet, Ducted outlet with an evase.
 Power rating (BHP) does not include drive losses.
 Performance ratings do not include the effects of appurtenances in the air stream.

PERFORMANCE DATA

RTS 402

WHEEL DIAMETER 40.25 IN.
 MAX WHEEL SPEED Class 30 - 2325 RPM

		STATIC PRESSURE (in. WG)																			
		6		10		12		16		20		22		25		28		30		32	
CFM	OV	RPM	BHP	RPM	BHP	RPM	BHP	RPM	BHP	RPM	BHP	RPM	BHP	RPM	BHP	RPM	BHP	RPM	BHP	RPM	BHP
20000	2145	1008	26.13																		
24000	2575	1053	31.75	1283	52.41																
28000	3004	1107	38.33	1324	61.08	1422	73.17														
32000	3433	1169	46.12	1373	70.92	1466	84.05	1639	111.5												
36000	3862	1238	55.44	1427	82.03	1516	96.22	1682	125.8	1834	156.8	1907	172.8								
40000	4291	1314	66.58	1488	94.7	1572	109.9	1730	141.6	1877	174.6	1947	191.7	2048	217.8	2146	244.7				
44000	4720	1394	79.8	1555	109.2	1633	125.2	1784	158.9	1925	194.1	1993	212.2	2091	239.9	2185	268.2	2246	287.5	2305	307
48000	5149	1479	95.28	1626	125.9	1699	142.6	1842	178.1	1978	215.4	2043	234.5	2138	263.8	2229	293.7	2288	314		
52000	5578	1567	113.2	1703	145.1	1771	162.5	1905	199.4	2034	238.5	2097	258.7	2189	289.6	2277	321.1				
56000	6007	1657	133.8	1783	167	1847	184.9	1972	223.2	2095	264	2156	285.1	2244	317.5						
60000	6436	1749	157.1	1867	191.7	1926	210.3	2044	249.8	2161	292.1	2218	314.1	2302	347.8						
64000	6865	1843	183.5	1954	219.5	2009	238.7	2119	279.5	2230	323.1	2284	345.7								

Performance shown is for installation type B - Free inlet, Ducted outlet with an evase.
 Power rating (BHP) does not include drive losses.
 Performance ratings do not include the effects of appurtenances in the air stream.

RTS 445

WHEEL DIAMETER 44.5 IN.
 MAX WHEEL SPEED Class 30 - 2100 RPM

		STATIC PRESSURE (in. WG)																			
		6		10		12		16		20		22		25		28		30		32	
CFM	OV	RPM	BHP	RPM	BHP	RPM	BHP	RPM	BHP	RPM	BHP	RPM	BHP	RPM	BHP	RPM	BHP	RPM	BHP	RPM	BHP
25000	2198	916	32.66																		
30000	2637	959	39.83	1165	65.42																
35000	3077	1010	48.26	1204	76.47	1292	91.43														
40000	3516	1068	58.29	1250	89.03	1334	105.3	1489	139.3												
45000	3956	1133	70.35	1302	103.3	1381	120.9	1530	157.5	1667	196	1732	215.8								
50000	4396	1204	84.81	1359	119.6	1434	138.3	1576	177.6	1707	218.7	1770	239.8	1861	272.1	1948	305.4	2005	328		
55000	4835	1280	102	1422	138.3	1492	158.1	1626	199.8	1753	243.5	1813	266	1901	300.3	1986	335.4	2040	359.3	2094	383.5
60000	5275	1359	122.1	1489	160	1554	180.7	1681	224.5	1802	270.7	1861	294.4	1946	330.8	2028	367.9	2081	393		
65000	5714	1441	145.4	1561	184.9	1621	206.3	1740	252	1856	300.4	1912	325.5	1994	363.8	2073	402.9				
70000	6154	1525	172.2	1637	213.3	1693	235.4	1804	282.8	1914	333.2	1967	359.4	2046	399.5						
75000	6593	1611	202.6	1715	245.5	1767	268.4	1872	317.2	1975	369.4	2026	396.6								
80000	7033	1698	236.9	1796	281.6	1845	305.4	1943	355.7	2040	409.5	2088	437.6								

Performance shown is for installation type B - Free inlet, Ducted outlet with an evase.
 Power rating (BHP) does not include drive losses.
 Performance ratings do not include the effects of appurtenances in the air stream.

PERFORMANCE DATA

RTS 490

WHEEL DIAMETER 49 IN.
 MAX WHEEL SPEED Class 30 - 1910 RPM

CFM	OV	STATIC PRESSURE (in. WG)																			
		6		10		12		16		20		22		25		28		30		32	
		RPM	BHP	RPM	BHP	RPM	BHP	RPM	BHP	RPM	BHP	RPM	BHP	RPM	BHP	RPM	BHP	RPM	BHP	RPM	BHP
30000	2178	830	39.19																		
35000	2541	861	46.19	1051	76.54																
40000	2904	898	54.19	1079	87.12	1160	104.7														
45000	3267	939	63.39	1111	98.94	1189	117.7	1333	157.3												
50000	3630	984	74.04	1146	112	1221	132.1	1361	174.2	1489	218.5										
55000	3992	1034	86.47	1186	126.5	1258	148	1392	192.7	1516	239.5	1575	263.7								
60000	4355	1087	100.9	1229	142.8	1297	165.4	1426	212.7	1547	262.2	1604	287.6	1687	326.6	1766	366.7				
65000	4718	1143	117.5	1275	161.1	1340	184.7	1464	234.5	1580	286.6	1636	313.4	1716	354.3	1794	396.3	1844	424.7	1893	453.7
70000	5081	1201	136.5	1324	181.6	1385	206.2	1504	258.2	1616	312.9	1670	341	1748	383.9	1824	427.8	1873	457.6		
75000	5444	1262	158.1	1376	204.7	1434	230.1	1546	284.1	1655	341.2	1707	370.6	1783	415.5	1856	461.4	1904	492.5		
80000	5807	1324	182.4	1431	230.5	1485	256.7	1592	312.5	1696	371.8	1746	402.4	1820	449.3	1891	497.1				
85000	6170	1387	209.5	1488	259.4	1539	286.3	1640	343.7	1739	404.9	1788	436.6	1859	485.3						
90000	6533	1451	239.6	1547	291.3	1594	318.9	1690	377.8	1785	440.9	1831	473.6	1900	524						

Performance shown is for installation type B - Free inlet, Ducted outlet with an evase.
 Power rating (BHP) does not include drive losses.
 Performance ratings do not include the effects of appurtenances in the air stream.

RTS 542

WHEEL DIAMETER 54.25 IN.
 MAX WHEEL SPEED Class 30 - 1800 RPM

CFM	OV	STATIC PRESSURE (in. WG)																			
		6		10		12		16		20		22		25		28		30		32	
		RPM	BHP	RPM	BHP	RPM	BHP	RPM	BHP	RPM	BHP	RPM	BHP	RPM	BHP	RPM	BHP	RPM	BHP	RPM	BHP
35000	2071	742	45.77																		
40000	2367	764	52.41																		
45000	2663	789	59.83	957	98.09																
50000	2959	816	68.1	979	109	1052	130.7														
55000	3254	847	77.37	1002	120.9	1073	143.9	1204	192.2												
60000	3550	880	87.85	1028	133.8	1097	158.1	1224	209												
65000	3846	916	99.71	1057	147.9	1123	173.5	1246	227.1	1359	283.2	1413	312.2								
70000	4142	954	113.1	1087	163.2	1151	190.1	1270	246.3	1381	305	1433	335.3	1509	381.8						
75000	4438	993	128.2	1119	180.1	1180	208.2	1296	266.9	1404	328.3	1455	359.9	1529	408.2	1601	457.8	1647	491.6		
80000	4734	1035	145.2	1154	198.7	1212	227.8	1324	288.9	1429	353	1479	385.9	1552	436.2	1621	487.7	1667	522.7	1711	558.2
85000	5030	1078	164.1	1190	219.1	1246	249.1	1353	312.5	1455	379.2	1504	413.4	1575	465.7	1644	519.2	1688	555.5	1731	592.1
90000	5325	1122	185.1	1228	241.6	1281	272.5	1384	337.9	1483	407	1531	442.5	1600	496.8	1667	552.4	1711	589.9	1753	628
95000	5621	1167	208.2	1268	266.3	1318	298	1417	365.2	1513	436.6	1559	473.4	1627	529.7	1692	587.2	1735	626.1	1776	665.4
100000	5917	1213	233.7	1309	293.4	1356	325.7	1451	394.7	1544	468.2	1589	506.2	1655	564.3	1719	623.8	1760	664.1		
105000	6213	1260	261.5	1351	322.8	1396	355.9	1487	426.6	1576	502	1620	541	1684	601	1746	662.4	1787	704		
110000	6509	1308	291.7	1394	354.9	1437	388.8	1524	460.9	1610	538	1652	578.1	1715	639.8	1775	703				

Performance shown is for installation type B - Free inlet, Ducted outlet with an evase.
 Power rating (BHP) does not include drive losses.
 Performance ratings do not include the effects of appurtenances in the air stream.

PERFORMANCE DATA

RTS 600

WHEEL DIAMETER 60 IN.
 MAX WHEEL SPEED Class 30 - 1560 RPM

STATIC PRESSURE (in. WG)																					
		6		10		12		16		20		22		25		28		30		32	
CFM	OV	RPM	BHP	RPM	BHP	RPM	BHP	RPM	BHP	RPM	BHP	RPM	BHP	RPM	BHP	RPM	BHP	RPM	BHP	RPM	BHP
42000	2045	669	54.98																		
48000	2337	687	62.82																		
54000	2629	709	71.56	863	117.8																
60000	2921	733	81.29	881	130.7	947	157														
66000	3214	760	92.17	902	144.7	966	172.5	1085	231												
72000	3506	789	104.4	924	159.9	987	189.3	1102	250.9												
78000	3798	820	118.2	949	176.5	1009	207.5	1121	272.1	1225	340.1	1274	375.2								
84000	4090	853	133.8	975	194.5	1033	227	1142	294.9	1243	365.8	1291	402.5	1360	458.8						
90000	4382	888	151.4	1004	214.2	1059	248.2	1165	319.2	1263	393.3	1310	431.4	1378	490	1442	550				
96000	4674	924	171.1	1034	235.9	1087	271.1	1189	345.1	1285	422.5	1331	462.1	1397	523	1460	585.3	1501	627.6	1542	670.6
102000	4966	962	193	1065	259.7	1116	296.1	1215	372.8	1308	453.2	1352	494.6	1417	557.8	1479	622.5	1520	666.3	1559	710.7
108000	5259	1001	217.4	1099	285.9	1147	323.3	1242	402.5	1332	486	1376	528.9	1439	594.5	1500	661.5	1539	706.9		
114000	5551	1041	244.2	1133	314.6	1179	352.9	1270	434.5	1358	520.7	1400	565.3	1462	633.2	1522	702.7				
120000	5843	1081	273.7	1169	346	1213	385.2	1300	468.8	1385	557.7	1426	603.7	1486	674	1545	745.7				
126000	6135	1123	305.9	1206	380.2	1248	420.3	1331	505.9	1413	597.2	1453	644.5	1512	717						
132000	6427	1164	341	1244	417.4	1284	458.4	1364	545.8	1443	639.3	1481	687.9	1539	762.4						

Performance shown is for installation type B - Free inlet, Ducted outlet with an evase.
 Power rating (BHP) does not include drive losses.
 Performance ratings do not include the effects of appurtenances in the air stream.

RTS 660

WHEEL DIAMETER 66 IN.
 MAX WHEEL SPEED Class 30 - 1420 RPM

STATIC PRESSURE (in. WG)																					
		6		10		12		16		20		22		25		28		30		32	
CFM	OV	RPM	BHP	RPM	BHP	RPM	BHP	RPM	BHP	RPM	BHP	RPM	BHP	RPM	BHP	RPM	BHP	RPM	BHP	RPM	BHP
52000	2081	610	67.99																		
58000	2321	625	75.9																		
64000	2562	641	84.56	781	139.9																
70000	2802	659	94.01	795	152.4	856	183.6														
76000	3042	678	104.3	809	165.9	869	198.6														
82000	3282	698	115.7	826	180.4	883	214.6	991	286.4												
88000	3522	720	128.2	843	195.8	899	231.7	1004	306.6												
94000	3762	744	142.1	861	212.4	916	249.9	1018	327.9	1112	409.8	1157	452.3								
100000	4002	768	157.4	881	230.2	934	269.2	1034	350.4	1126	435.4	1170	479.3	1233	546.8						
106000	4243	794	174.4	902	249.4	953	289.8	1051	374.3	1141	462.4	1184	507.8	1246	577.5	1305	649.2				
112000	4483	821	193	924	270.1	974	311.9	1068	399.3	1157	490.7	1199	537.6	1260	609.6	1318	683.4	1356	733.7		
118000	4723	849	213.5	947	292.5	995	335.5	1087	425.9	1173	520.4	1214	568.9	1274	643.2	1332	719.3	1369	771.1	1405	823.5
124000	4963	877	235.8	971	316.7	1017	360.8	1106	453.8	1191	551.6	1231	601.8	1290	678.5	1346	756.9	1383	810	1419	864
130000	5203	907	260.1	996	342.8	1040	388	1127	483.6	1209	584.2	1249	636.1	1306	715.1	1362	796	1398	850.6		
136000	5443	936	286.5	1022	371	1064	417.1	1148	515.1	1228	618.6	1267	671.9	1323	753.4	1378	836.6	1413	893		
142000	5683	967	315	1048	401.5	1089	448.5	1170	548.6	1248	654.8	1286	709.6	1341	793.4	1395	879.1				

Performance shown is for installation type B - Free inlet, Ducted outlet with an evase.
 Power rating (BHP) does not include drive losses.
 Performance ratings do not include the effects of appurtenances in the air stream.

PERFORMANCE DATA

RTS 730

WHEEL DIAMETER 73 IN.
 MAX WHEEL SPEED Class 30 - 1280 RPM

STATIC PRESSURE (in. WG)																					
		6		10		12		16		20		22		25		28		30		32	
CFM	OV	RPM	BHP	RPM	BHP	RPM	BHP	RPM	BHP	RPM	BHP	RPM	BHP	RPM	BHP	RPM	BHP	RPM	BHP	RPM	BHP
65000	2126	554	84.92																		
75000	2453	573	98.57																		
85000	2780	594	113.9	717	185.1	773	223.1														
95000	3107	618	131.3	736	207.7	789	248.2														
105000	3434	644	151.2	756	232.6	808	275.7	903	365.9												
115000	3761	672	173.9	779	259.9	828	305.7	921	401.2	1006	501.4	1046	553.4								
125000	4088	703	199.9	803	290	851	338.3	940	439.1	1023	544.4	1062	598.8	1119	682.4						
135000	4415	736	229.6	830	323.3	875	373.9	961	479.9	1042	590.6	1080	647.6	1135	734.8	1188	824.4	1223	885.4		
145000	4742	770	263.4	858	360.3	901	413	984	523.9	1062	639.9	1099	699.5	1153	790.6	1205	883.9	1239	947.4	1272	1011.8
155000	5069	805	301.5	888	401.5	929	456	1008	571.3	1084	692.5	1120	754.7	1173	850	1223	947.2	1256	1013.1		
165000	5396	842	344.2	919	447.3	958	503.4	1034	622.7	1107	748.8	1142	813.6	1194	912.8	1243	1014	1275	1082.6		
175000	5723	879	391.8	952	497.9	989	555.6	1061	678.5	1132	809	1166	876.3	1216	979.5	1264	1084.7				
185000	6050	917	444.4	986	553.8	1021	613	1090	739.2	1157	873.8	1191	943.4	1239	1050.2						

Performance shown is for installation type B - Free inlet, Ducted outlet with an evase.
 Power rating (BHP) does not include drive losses.
 Performance ratings do not include the effects of appurtenances in the air stream.

RTS 807

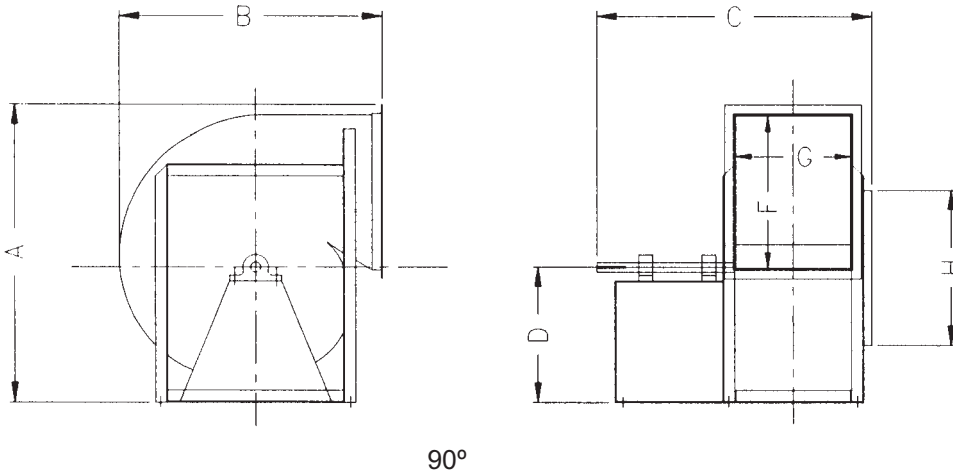
WHEEL DIAMETER 80.75 IN.
 MAX WHEEL SPEED Class 30 - 1200 RPM

STATIC PRESSURE (in. WG)																					
		6		10		12		16		20		22		25		28		30		32	
CFM	OV	RPM	BHP	RPM	BHP	RPM	BHP	RPM	BHP	RPM	BHP	RPM	BHP	RPM	BHP	RPM	BHP	RPM	BHP	RPM	BHP
80000	2137	502	104.5																		
90000	2404	515	118.1																		
100000	2672	530	133	644	217.9																
110000	2939	547	149.5	656	239.7	706	287.6														
120000	3206	565	167.8	671	263.2	718	313.7	807	419.9												
130000	3473	585	188.2	686	288.6	732	341.8	818	452.9												
140000	3740	606	211	703	316	748	371.8	831	488.2	908	610.6										
150000	4007	629	236.5	721	345.6	764	404	846	525.8	921	653.2	957	718.9	1008	820.1						
160000	4275	652	265	740	377.8	782	438.6	861	565.6	934	698.2	969	766.6	1020	871.5	1068	979.1				
170000	4542	677	296.6	760	412.8	800	475.8	877	607.9	949	745.9	983	816.9	1033	925.4	1080	1037	1111	1112.5	1141	1189.5
180000	4809	702	331.7	781	451.1	820	516	894	652.8	964	796.2	998	869.8	1046	982.4	1093	1097.6	1123	1175.7	1153	1255.1
190000	5076	729	370.4	803	492.8	840	559.5	912	700.8	980	849.2	1013	925.5	1061	1042.1	1107	1161.2	1136	1241.9	1165	1323.9
200000	5343	756	412.7	827	538.2	862	606.6	931	751.9	998	905.3	1030	984.1	1076	1104.7	1121	1227.7	1150	1311.3	1179	1395.8
210000	5610	783	459.1	851	587.6	884	657.6	951	806.6	1015	964.4	1047	1045.8	1092	1170.4	1136	1297.5	1165	1383.5	1193	1470.5
220000	5878	811	509.5	875	641.3	908	712.7	972	865.1	1034	1027.2	1064	1110.9	1109	1239.3	1152	1370.3	1180	1459.1		

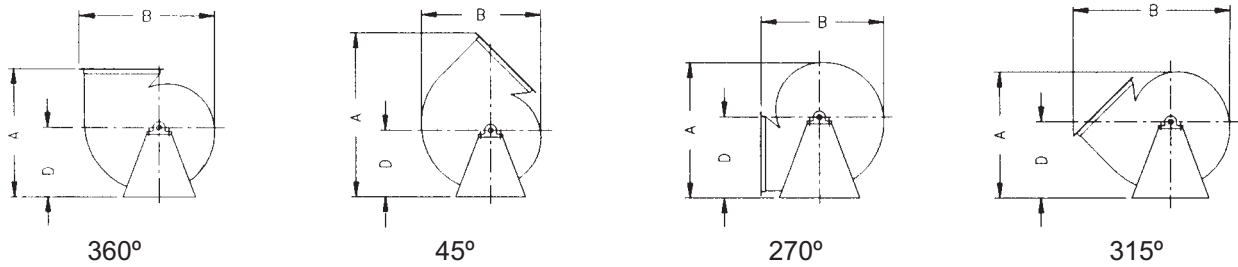
Performance shown is for installation type B - Free inlet, Ducted outlet with an evase.
 Power rating (BHP) does not include drive losses.
 Performance ratings do not include the effects of appurtenances in the air stream.

DIMENSIONAL DATA

Sizes 270 - 807 Arrangement 1



Angular Discharge Dimensions, (viewed from drive side)



SIZE	A				B				C	D					F	G	H
	90				90					90							
	270	45	360	315	270	45	360	315		90	45	360	315	270			
270	60	73	60	55	56	51	56	69	57	26 3/4	28 13/16	31 3/8	33 7/8	37 1/4	31 3/4	19 5/8	28 1/2
300	67	80	66	61	62	57	62	76	60	29 11/16	32	34 13/16	37 5/8	41 5/16	35 5/16	21 5/8	31 3/4
330	73	88	72	66	67	62	68	83	64	32 1/8	34 11/16	37 3/4	40 13/16	44 13/16	38 13/16	23 3/4	34 7/8
365	80	97	79	73	75	68	76	92	68	34 15/16	37 3/4	41 3/16	44 5/8	49 7/16	42 15/16	26 1/4	38 1/2
402	88	106	87	80	82	75	83	101	72	38	41 1/8	44 7/8	49 3/8	53 7/8	47 3/8	28 15/16	42
445	96	116	95	89	90	83	92	111	78	41 7/16	44 7/8	49 1/16	53 3/16	58 7/8	52 3/8	31 7/8	46 1/2
490	105	127	104	95	99	91	101	122	85	45	48 13/16	53 3/8	57 7/8	64 3/16	57 11/16	35 3/16	51
542	116	140	115	105	110	100	111	135	94	49 3/4	54	59 1/16	64 1/8	70 7/8	63 7/8	38 15/16	56 1/2
600	128	154	126	116	121	111	123	149	104	54 7/16	59 1/16	64 11/16	70 5/16	77 5/8	70 5/8	42 3/4	62 1/2
660	140	169	138	127	132	122	134	163	114	59 13/16	64 7/8	71 1/8	77 5/16	85 3/16	77 11/16	47 3/16	69
730	154	186	152	140	147	134	149	176	124	65 1/2	71 1/8	78	84 13/16	93 15/16	85 15/16	52 3/16	76
807	170	205	167	154	162	148	164	199	135	71 3/4	78	85 5/8	93 3/16	103 1/16	95 1/16	57 11/16	84 1/2

- Columns A, B, and C have been rounded up to the nearest 1". Dimensions F, G and H, are outside dimensions. Dimension C is max from all available construction classes.
- All dimensions shown on this and other pages are for general information only and should not be used for precise construction/installation purposes. Only prints marked certified should be used for this purpose. All fans are shown in clockwise rotation (as viewed from side opposite fan inlet) and are viewed from the drive side of fan. Counter clockwise fans are dimensionally equal but viewed in a mirror image.
- Due to continuous product improvement at Air Tech, dimensions are subject to change. For more complete dimensional information, refer to the applicable Air Tech submittal drawing.

QUICK REFERENCE CHECK LIST

In the attempt to ensure the proper selection and application of the fan, we would like to offer the following table to assist in the process. Make sure you address each of the following items as a valuable check list.

- 1) **Fan Type**
- 2) **Fan Size**
- 3) **Construction Class of Fan**
- 4) **Discharge Position**
- 5) **Wheel Rotation** (*CW or CCW*)
- 6) **Fan Arrangement**
- 7) **Motor Location** (*Arr. 1, 3, and 9*)
- 8) **Performance Requirements**
 - a. CFM
 - b. SP
 - c. Fan RPM
 - d. BHP
 - e. Temperature
 - f. Air Density
- 9) **Motor Requirements**
 - a. Motor HP
 - b. Motor RPM
 - c. Enclosure Type
 - d. Voltage/Phase/Cycle
 - e. Motor Frame Limitations (*Arr. 9*)
- 10) **V-Belt Drive**
 - a. Constant or Variable Speed
 - b. Service Factor
- 11) **Accessories** (*List Accessories Required*)
 - a. Access Doors bolted or hinged-flush or raised-location
 - b. Belt Guard, three sided or totally enclosed
 - c. Companion Inlet Flange
 - d. Drain
 - e. Extended Lube Lines
 - f. High Temp. Package
 - g. Inlet and Outlet Screens
 - h. Inlet Flange
 - i. Outlet Flange
 - j. Outlet Damper, Opposed Blade or Parallel Blade
 - k. Shaft Cooler
 - l. Shaft Guard
 - m. Shaft Seal
 - n. Spark Resistant Construction (*type A, B or C*)
 - o. Special Protective Coatings
 - p. Split Housing
 - q. Unitary and Inertia Bases
 - r. Variable Inlet Vane (*VIV*)
 - s. Vibration Isolators (*RIS or Springs*)
 - t. Weathercover

Industrial
Air Technology Corp.